

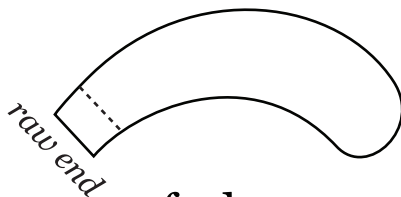
Caterpillar

青虫

aomushi
あおむし

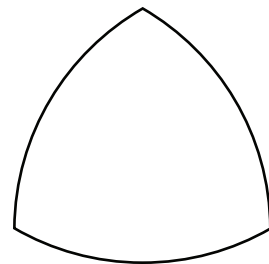


Seam allowance not included in pattern pieces; please add allowance appropriate to your chosen fabric. Sew feelers first, invert through raw end, do not stuff. Pin completed feelers into seam between head caps and side/back pieces, then sew raw end into seam. Complete figure sewing wrong side out, invert to stuff.



feelers

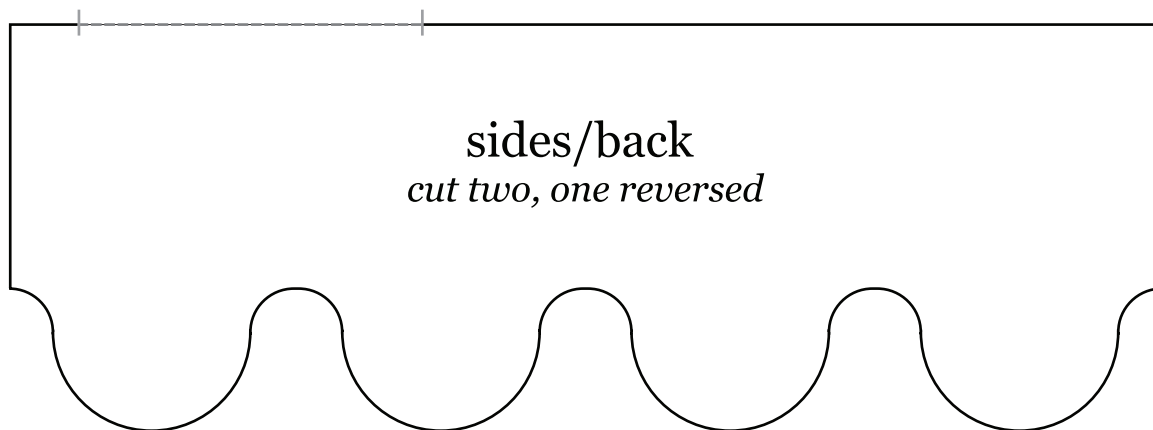
cut four, two reversed



head + tail caps

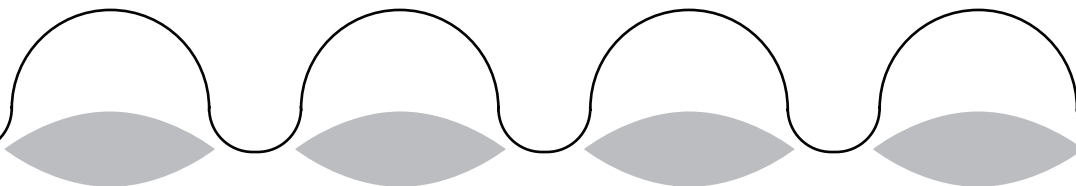
cut four

suggested placement of gap for turning and stuffing



sides/back

cut two, one reversed



belly

cut one

*grey areas should be darted in on the wrong side of the fabric
(for details of darting process, see blog)*