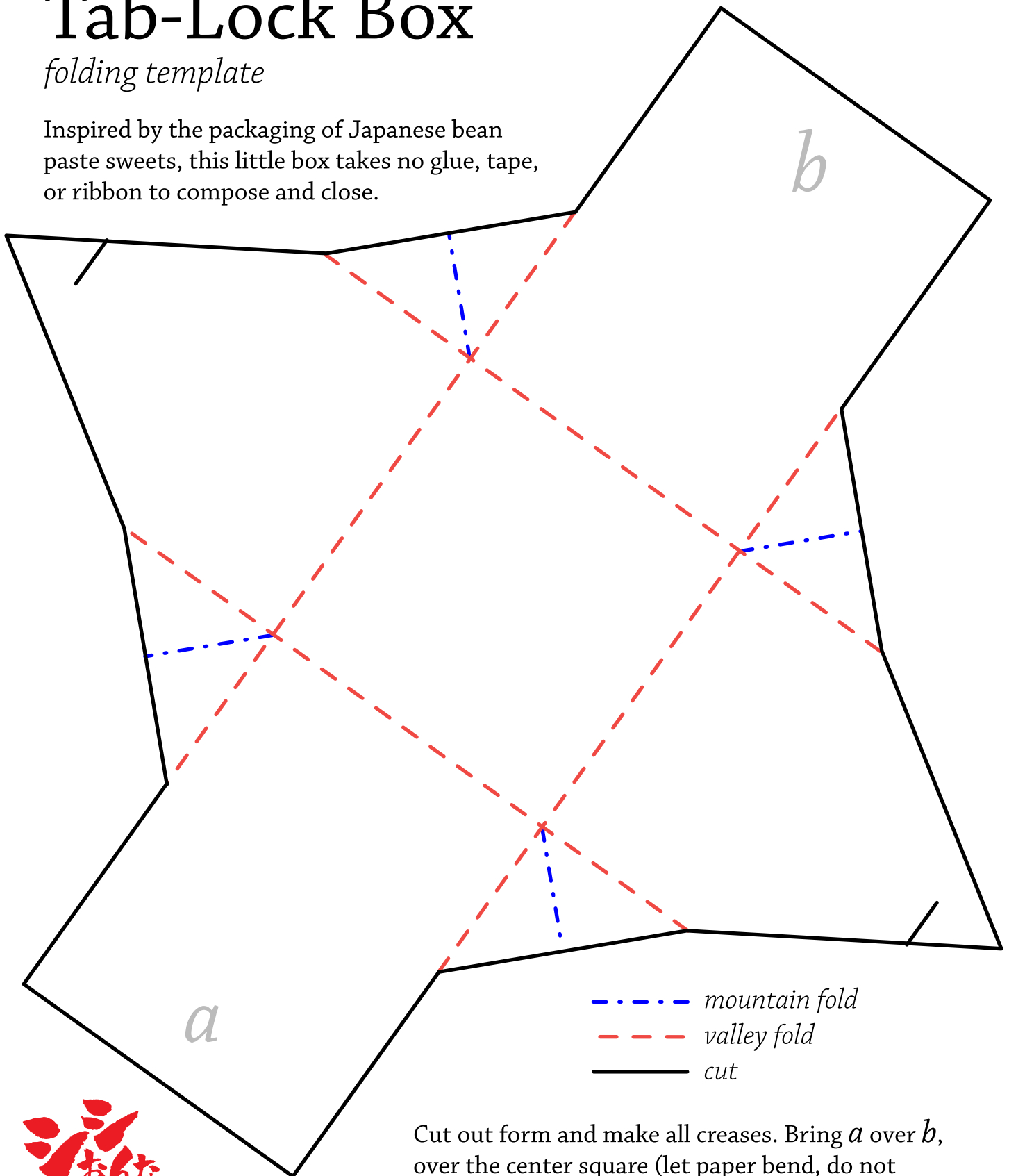


Tab-Lock Box

folding template

Inspired by the packaging of Japanese bean paste sweets, this little box takes no glue, tape, or ribbon to compose and close.



- mountain fold
- valley fold
- cut

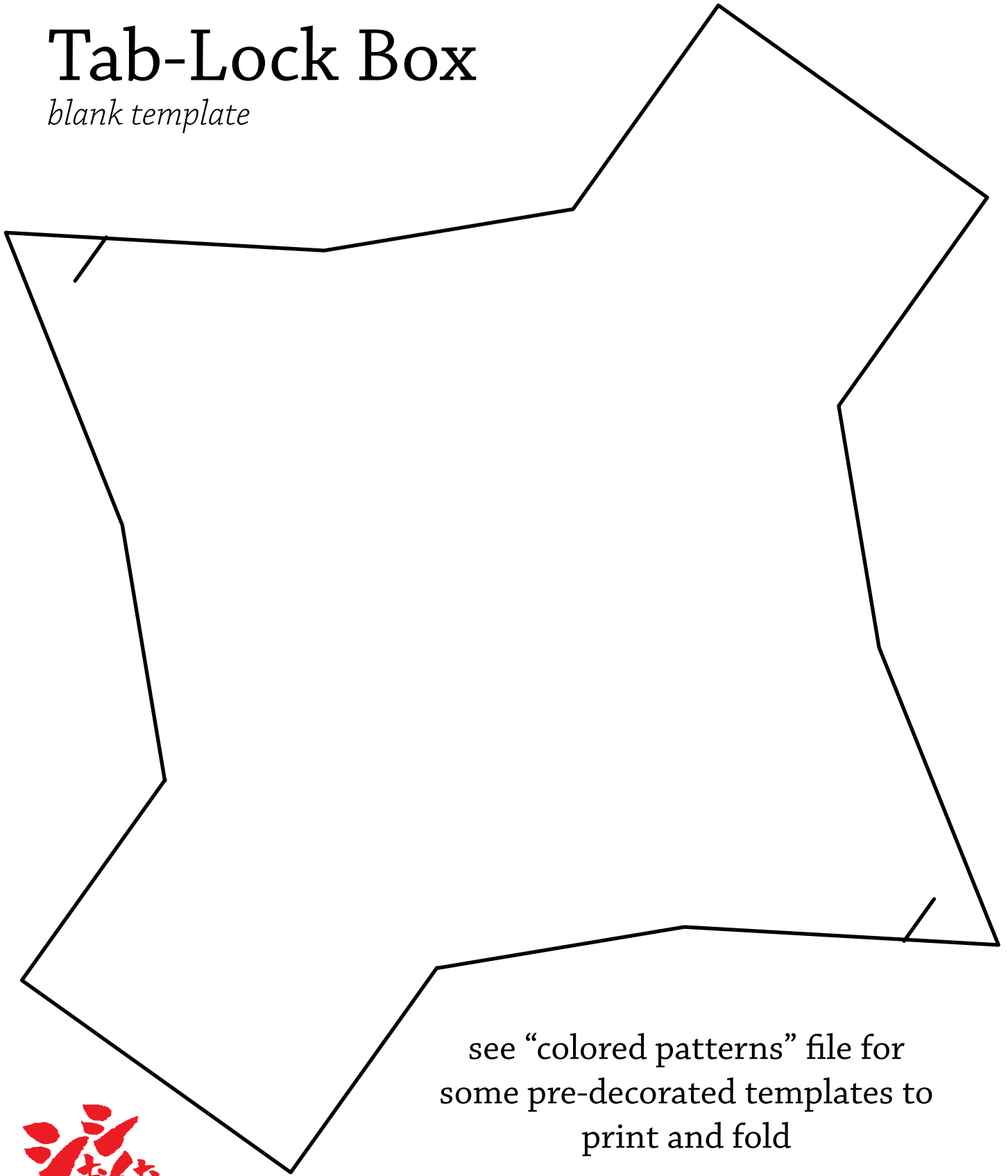
Cut out form and make all creases. Bring *a* over *b*, over the center square (let paper bend, do not crease). Bring two slotted tabs together and lock.



free to distribute, please do not sell this template or items made from it
tutorial images, instructions, and additional colored patterns available at shishigirl.blogspot.com

Tab-Lock Box

blank template



see “colored patterns” file for
some pre-decorated templates to
print and fold



*free to distribute, please do not sell this template or items made from it
tutorial images, instructions, and additional colored patterns available at shishigirl.blogspot.com*